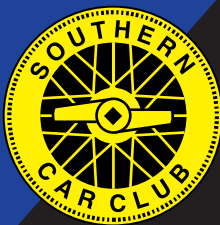


Southern Car Club



presents

THE WUGGING STAGES



sponsored by

Utting Estates Ltd

Saturday 7th August 2004

- ACSMC/ASEMC Bigger Bites 2004 Tarmac Stage Rally Championship
- Plymouth Agencies Ltd. ASW/MC Sealed Surface Rally Championship
- LCAMC Sealed Surface Stage Rally Championship

Quality solutions for hire and sale wherever you are!

- Offices
- Training Rooms
- Toilets
- Welfare Facilities
- Document Storage
- Staff Dining Rooms
- Classrooms
- Showers
- Stores



ott

Elliott

Elliott

Elliott

Elliott

Elliott

Elliott

Elliott

Elliott

Elliott

Elliott

Elliott

Elliott

Elliott

Elliott

Elliott

Elliott

Elliott

Elliott

Elliott

Elliott

Elliotthire

The UK's No.1

The UK's Largest Supplier of Portable
Accommodation and Secure Storage



Sponsor of Canford
Park Arena Service
Area of the



FREEPHONE 0808 108 4444

Phone now for a fully detailed brochure
www.elliottire.co.uk



FOREWORD

For many years, the Southern Car Club Ltd has promoted a multi-use special stage rally at the Avon Park test track near Ringwood in Hampshire. Sadly, that venue is no longer available for motor sport use but we have been very fortunate to relocate this multi-championship rally to the superb all-tarmac venue at Colerne Airfield in Wiltshire, whilst at the same time retaining our allotted date within the championship calendars.

As in previous years, we have listened to the comments of our past competitors and taken heed of their advice (and criticisms) in an effort to produce an event which you want for your enjoyment.

With that in mind, the event will be held on Saturday 7th August 2004 and called **THE WUGGING STAGES** kindly sponsored by Utting Estates.

The rally is a counting round towards ACSMC/ASEMC Bigger Bites 2004 Tarmac Stage Rally, Plymouth Agencies Ltd ASWMC Sealed Surface Stage Rally and LCAMC Sealed Surface Stage Rally Championships. In a change from previous years previous years, signing-on and Scrutineering will now take place on the morning of the rally. At the request of the Land Owners and Residents, the entire event will now take place on the Saturday (not the Sunday, as in previous years).

Once again, a 4-stage "Trophy Rally" will be available for those competitors who have the misfortune to retire from the main event before the lunch break – See Section 30 of the Supplementary Regulations for details.

Finally, we are supporting the Southern Rescue Group for 2004 and hope to make a large contribution towards their ever increasing annual running costs. If you wish to make an additional contribution, please enclose it with your entry form.

The entry fee has been reduced from last year, whilst the competitive stage mileage has been increased – that has to be good value.

As entries are expected to be at a premium, they will be processed strictly on a 'first come' basis, as received by post only. Only those entries with the correct entry fee enclosed will be accepted.

As spectators are not permitted at this venue, anyone unable to compete is asked to volunteer their services as a marshal. Last year this rally was held on the hottest day in British records. Whilst we cannot guarantee the same hot weather once again, we can promise a good days motorsport.


We look forward to seeing friends old & new at Colerne, on Saturday 7th August.

The Organising Team

PS: **No spectators or animals are permitted at this event, nor are persons under the age of 16 yrs. This is a contractual requirement by the landowners. We ask that you respect that requirement.**

If you are unable to compete, we would welcome your help as a marshal, please contact Tim Large our Chief Marshal, a free packed lunch is on offer courtesy of our caterers Bigger Bites if you sign-on by 08.00hrs on Saturday morning.

BIGGER BITES



MOBILE CATERING
ROBERT & GARRY DIPPLE

Also
R & G Die Cast Rally Models

16 Old Parish Lane, Weymouth, Dorset, DT4 0HY
Phone: 01305 767895 - Mobile: 0777 5753541

The WUGGING STAGES

7 August 2004

Supplementary Regulations

1. The Southern Car Club Ltd. will promote a National B permit Multi-Use Stage Rally on Saturday 7th August 2004 at Colerne Airfield, Wiltshire (MR 173/800721). The event will be sponsored by Utting Estates and will be known as **The Wugging Stages**.
2. The event will be governed by the General Regulations of the Motor Sports Association, (incorporating the provisions of the International Sporting Code of the FIA), these Supplementary Regulations, and any written instructions that the Organising Club may issue for the event.
3. MSA Permit Number: 24692 has been issued for the event.
4. The event is a qualifying round of:
ACSMC/ASEMC Bigger Bites 2004 Tarmac Stage Championship (No. 035/2004), Plymouth Agencies Ltd ASWMC Sealed Surface Stage Rally Championship 2004 (No: 078/2004), LCAMC SV Stage Rally Championship (No: 055/2004) and is also open to all fully elected members of the organising Club and Member clubs of the ACSMC, ASEMC, ASWMC and LCAMC.

Scrutineering & Documentation will take place in Colerne Airfield – full details will be provided in a Competitors Bulletin. At documentation all competitors must produce a valid Club Card, Championship Registration Card (if applicable), MSA Competition Licences and Entrant's Licence (if applicable). Rally Special Stage Vehicle Log Books (K25.2) will be inspected at Scrutineering; failure to produce a log book will result in refusal to start.
5. The programme of the meeting will be:
Scrutineering & Documentation - Saturday 7th August 2004 starts at 07.00hrs and closes at 09.00hrs.

Any Competitor not signed on by 30 minutes before the due start time of the first competitor may be excluded.

First car starts at 09.01hrs on Saturday 7th August 2004.

All entrants must ensure that all persons connected with their entry have read and fully understand the following statement: 'Every person participating in this event, whether employed or voluntary, shall take reasonable care for the health and safety of themselves or other people who may be affected by his/her acts or omissions during the operation of the event.'
6. The event will contain 8 special stages with a mileage of approx. 65 miles. These stages will be timed to the nearest preceding whole tenth of a second in accordance with K30.2. All stages will be on good quality tarmac. Cars will start at 30 second intervals under the Target Timing System (K.30). The entire rally will take place within the confines of Colerne Airfield and there will be no public road sections. Competitors will be supplied with details of special stages in the form of stage diagrams at documentation. OS maps will not be required.
7. Classes will be as follows:

Class 1	Cars up to 1400cc
Class 2	Cars 1401 to 1600cc
Class 3	Cars 1601 to 2000cc
Class 4	Cars 2001cc and over
Class 5	All 4WD

All vehicles must comply with current MSA Technical Regulations. A car having forced induction, turbo charger or supercharger will have its capacity increased by 70% to establish their class. Cars need not be taxed (K37.16.1) but the entrant must be in possession of a vehicle registration document and a current MOT certificate for the vehicle, which shall be available for inspection at the event.

8. The Awards Presentation, immediately following the event, will take place at the Main Control Caravan at Colerne Airfield. Awards will be presented as follows:

First Overall	The Southern Car Club Trophy© plus 2 awards
1st in Class	2 awards
2nd in Class	2 awards subject to 5 starters in class
3rd in Class	2 awards subject to 10 starters in class
1st Novice*	The Tony Straker Trophy© plus 2 awards
1st Lady Driver*	1 award
Best SCC crew*	2 awards (members at publication of ASRs)
Best JMC & LCC Crew *	2 awards (members at publications of ASRs)
Best ACSMC/ASEMC Rally 2004 Tarmac Championship Crew*	2 awards
Best ASWMC Sealed Surface Stage Rally Championship Crew*	2 awards
Best LCAMC SV Stage Rally 2004 Championship Crew *	2 awards
First Overall – Trophy Rally	2 awards

- * Only 1 award may be presented per crew except in the case of Novice, Lady Driver, SCC, Best JMC & LCC, Best ACSMC/ASEMC, ASWMC, LCAMC.
© These trophies are the property of Southern Car Club Ltd

A 'Novice' shall be defined as a driver who has not previously won a class or overall award on a rally.

Additional awards may be announced and presented at the Organisers' discretion.

9. The entry list opens on the publication of these regulations and finally closes on Saturday 31st July 2004. The entry fee is £175.00 (inclusive of £60.53 insurance & MSA Permit) and includes a nominal donation towards Southern Rescue. All entries must be made on the official form and accompanied by the appropriate fee. Cheques should be made payable to 'Southern Car Club Ltd.'
10. The Entries Secretary to whom all entries must be sent is:
Sue Tyler, 101 Hightown Road, Ringwood, Hampshire BH24 1NL
Tel: (h) 01425 478422
11. The maximum entry for the meeting is 80 plus 5 reserves. The minimum entry for the meeting is 50. The minimum for each class is 4. Should any of the above minimum figures not be reached, the organisers reserve the right to either cancel the meeting or amalgamate classes as necessary. **Entries will be selected on a 'First Come First Served' basis as received by post only.** Entry fees will be refunded if cancelled in writing by the 31st July 2004 LESS a cancellation fee of £85. Thereafter, entry fees will only be refunded (less cancellation fee) if the maximum number of entries has been received **and** the vacated place is filled by a reserve.
12. **OFFICIALS**
- | | |
|------------------------------|--|
| MSA Steward | Mr B Shewan |
| Stewards | Dick Pease/Neil Roden |
| Clerk of the Course | Haydn Chappell - (h) 01293 426229 |
| Deputy C. of C (Admin) | Matt Fowle |
| Deputy C. of C (Route) | Ray Tyler |
| Asst. C of C/Results Manager | Michael Weeks |
| Secretary of the Meeting | Janet Chappell
(h) 01293 426229
email: haydnrschappell@aol.com |
| Entries Secretary | Sue Tyler - (h) 01425 478422 |

12. **OFFICIALS continued**

MSA Scrutineer	Paula & Rob Alderman		
MSA Environmental Inspector	Simon Marks		
Chief Time Keeper	Vaughan Allcock		
Chief Medical Officer	Dr Ian Mew		
Chief Marshal	Tim Large – (h) 01934 743600		
Chief Safety Officer	Julian Redston		
Rescue	Guardian Rescue		
	Guardian Stage Safety Unit		
Recovery	Fox Recovery		
Communications	June Aslin		
ACSMC/ASEMC Championship Co-ordinator	Wilf Jones	(h) 01794 323250	
ASWMC Championship Co-ordinator	Alan Witney	(h) 01548 559169	
LCAMC Championship Co-ordinator	Keith Barker	(h) 020 8303 7367	

PLEASE DO NOT TELEPHONE OFFICIALS AFTER 9.00PM

- 13. Provisional results will be published as soon as possible following the finish of the event, on the Official Notice-Board, this will be situated at the Control Caravan.
- 14. Protests and Appeals must be lodged in accordance with O.5 and O.6.
- 15. Entrants will be supplied with Route Instructions/Time Card and details of the special stages, Documentation. These documents will provide all the information necessary to traverse the course.

Servicing will be allowed in the specified service area only; a spill-resistant ground sheet should be placed beneath all cars being worked upon.

- 16. Competitors must be identified by door numbers to comply with E11.3.11. Competitors **MUST** provide these themselves. Competitors' vehicles may also be required to carry advertising material provided by the organisers.
- 17. Competitors will start with zero penalties. Classification for order of merit will be by reference to total time lost, the winner being the competitor with the least penalty. In the event of a tie, the highest placed will be the competitor who has completed the greatest distance from the start with least penalty, or thereafter by any means at the organisers' discretion.
- 18. Marking and penalties will be as printed in the relevant section of the MSA General Regulations K31 except for the following which will be replaced:

m) Excessive vehicle noise EXCLUSION

Please note that K31.c is deemed to include deliberately striking the chicane elements in order to gain an advantage and also taking the wrong route at split junctions or otherwise.

19. **SOUND TESTING**

In accordance with K5 and E12.17.8 (100 dBA at 0.5m).

All vehicles may also be subject to additional sound tests should they be considered by the organisers as producing excessive sound which may violate the venue conditions of use. Any vehicle failing to meet the requirements of such tests shall be given up to 30 minutes to effect permanent repairs (wire wool is NOT acceptable). If after effecting the repair the vehicle is still deemed to have failed to meet the specified maximum sound limit then it shall be EXCLUDED from the event. Any vehicle producing spurious sounds (e.g. backfires or popping of any kind) may be subject to immediate withdrawal until the spurious sound is eliminated. **THE USE OF SOUND GENERATING ANTI-LAG SYSTEMS IS PROHIBITED WITHOUT EXCEPTION AND WILL LEAD TO IMMEDIATE EXCLUSION.** In all cases the decision of the Clerk of the Course or his Deputy, in conjunction with the MSA Environmental Inspector, shall be final.

20. The following MSA General Regulations are modified:
- K9.1.3 Only the nominated driver shall drive on any special stage
K29.1 Stages will open upon arrival of the Course Opening Car and will close 1 minute after the due time of the last car.
K25.12 The timing procedure to be used is as detailed in 22 a) & b) below.
21. Please note MSA General Regulation K25.10 and the use of red flags. The red flag procedure will be in operation for all stages.
- 22.a) **Special Stage Arrival (SSA)**
Competitors should arrive at their due time as indicated in Official Bulletins and/or Time Cards.
- b) **Special Stage Start Control (SSS)**
- (i) At the Special Stage Start the marshal will enter the actual start time, which will normally correspond with the provisional start time in hours and minutes, and (if Competitors are to start at 30-second intervals) seconds. Once a Competitor has clocked in at an SSA, the Start Marshal will assume that they are ready to start the Stage and will issue a Start Time as soon as the Start Line is clear, whether the Competitor is ready or not.
 - (ii) As each section is timed separately, the time taken from SSA to SSS is 'Dead Time' and delays are automatically allowed for.
 - (iii) The area between SSA and SSS is 'Parc Ferme'.
 - (iv) The start will be signalled by traffic lights which will go from RED (15 seconds to go) through AMBER (5, 4, 3, 2, 1 seconds to go) finally to GREEN at the start time. Electronic beams will be used to determine a Jump Start.
In the event of equipment failure, the start procedure will revert to the manual system that is described in MSA General Regulation K25.12 (there will be no 30 second verbal warning for stages starting at 30 second intervals).
- c) **Special Stage Finish Control (SSF)**
- (i) A competitor will receive his Special Stage Finish Time in hours, minutes, seconds and tenths of a second at the Special Stage Finish Control.
 - (ii) Any Competitor who fails to stop at the Stop Line must return on foot; reversing the car is prohibited and subject to the Penalty of **EXCLUSION** (K25.9.1 and K31(p)).
 - (iii) A photo beam finish will be utilised on the Flying Finish Line, recording times to a tenth of a second. Times will be entered on Competitors Time Cards at the Stop Line. In the event of equipment failure, times will be established by means of back-up clocks.
23. **JUDGES OF FACT**
- Judges of Fact appointed by the organisers will be on duty throughout the event to observe and report upon any competitor in breach of these SR's, or of MSA General Regulations K24.2.11 (B, C, E, F, G, H, I, J). All Stage Marshals and Officials will be Judges of Fact in respect of K31(c).
- A list of named judges will be posted on the official notice board.
24. All cars must be ready at their indicated start times for Stage One.
- All cars must be ready to attempt following stages in numerical order at the Target Time as each stage opens. Gaps in the entry will be closed up.
25. No petrol or water is available at the venue. Please ensure you bring enough fuel to complete the event. **Overnight camping before/after the event is strictly forbidden.**
26. Professional catering and WC facilities will be available at the venue. **Barbecues and open fires are specifically forbidden.**
27. **No persons under the age of 16 will be allowed at Colerne during the event – please do not embarrass us or you by trying to contravene this regulation, as required by the Landowners.**
28. **No spectators or animals will be admitted to the venue. This will be strictly observed throughout the event.**
29. **No correspondence will be entered into regarding the final entry list.**

30. **TROPHY RALLY**
The Trophy Rally will be contested over stages 5, 6, 7 & 8. Competitors who retire during stages 1, 2, 3 or 4 **may** be eligible to compete in the Trophy Rally, for which there will be a separate overall award for the crew with the least penalties on stages 5, 6, 7 & 8. Competitors in the Trophy Rally will **not** be included in the results of the main event.
31. Competitors who wish to compete in the Trophy Rally must seek written authorisation from the Secretary of the Meeting and have their car re-scrutineered. It will **not** be necessary to sign-on again.
32. Competitors in the Trophy Rally will follow the main event in the order in which they retire.
33. Competitors who have been excluded from the main event as a result of disciplinary procedures will **not** be eligible for the Trophy Rally.
-

Previous Winners

Goodwood, Sussex

Nov 1995	Would be Good Stages	Mark Welch/Mark Norris	Escort Cosworth
Nov 1996	Would be Good Stages	Terry & Kim Armstrong	Escort 2000
Aug 1997	Would be Good Stages	Mark Worley/David Gambling	Escort Cosworth
Aug 1998	Would be Good Stages	Gavin Rodgers/Carrie Parsons	Escort 2000

Avon Park, Hampshire

Aug 1999	KSport Tarmac SV Stages	Steve Fleck/???	Escort Cosworth
Aug 2000	Poole Car Centre Stages	Mark & Mick Slater	Metro 6R4
Aug 2001	Square Deal Caravans Rally	Steve & Yvonne Furzeland	Metro 6R4
Aug 2002	Bournemouth SEAT Rally	Steve & Yvonne Furzeland	Metro 6R4
Aug 2003	Bournemouth SEAT Rally	Will Nichols/Max Utting	Subaru Impreza

Colerne Airfield, Wiltshire

Aug 2004	The Wugging Stages	??/?	
----------	--------------------	------	--

ACKNOWLEDGEMENTS

Bigger Bites	Marshfield Parish Council
BK Competition Tyres	MSA
Bristol University Air Squadron	
Colerne Parish Council	North Wilts District Council
Defence Estates, Durrington	OTM Servo Mechanism Ltd
Elliotthire	Utting Estates
Flt. Lt Bradley (BUAS), Colerne	Xenogamy Ltd
All medical, rescue, recovery and communications crews and all safety marshals.	



WHY NOT JOIN US ?

The Southern Car Club Limited is one of the largest motor clubs in the south of England and is celebrating its 46th year in 2004. The club is affiliated to the Motor Sports Association and various Regional Associations; members are invited to compete in many varied events.

We meet every Thursday evening from 8.30pm at The South Hatch Restaurant, Epsom Downs, Surrey and cater for people interested mainly in Stage Rallying, Historic Car events, Production Car Trialing, Autotests and organising and marshalling on events.

The club is joint organiser of one of the major Special Stage Rallies in this country (Rallye Sunseeker), counting towards the KUMHO Tyres National Rally Championship and also runs a round of the MSA and BRTDA National Production Car Championship. We also run several smaller events for club members throughout the year.

We enjoy a very good social programme including a Dinner and Dance with Awards Presentation in February and a summer Barbecue.

So whatever your interest in motor sport, Southern Car Club could well be just the sort of friendly club you should join.

Why not contact our membership secretary:

TIM HINES on 020 8688 5373
E-mail: thines@sacs.co.uk

for further information.

The Wugging Stages 7th August 2004

MARSHALS FORM

To put on events of this nature requires a large number of volunteers. If you are not competing why not complete the form below and volunteer to marshal.

As an added incentive, every marshal signed-on by 08.00hrs on Saturday 7th August, will receive a free packed lunch courtesy of Bigger Bites.

Name

Address

.....

.....

Tel:(H).....(W)

Club

Experience

.....

MSA Rally Marshals Licence No:

Number in Party

Send this form to:

Tim Large, Chief Marshal
1 Springfield Close, Cheddar, Somerset BS27 3RA
Tel: (home) 01934 743600
Email: twlarge@hotmail.com

DECLARATION OF INDEMNITY

I declare that I have been given the opportunity to read the General Regulations of the Motor Sports Association and, if any, the Supplementary Regulations for this event and agree to be bound by them. I declare that I am physically and mentally fit to take part in the event and I am competent to do so. I acknowledge that I understand the nature and type of the competition and the potential risk inherent with motor sport and agree to accept that risk. Further I understand that all persons having any connection with the promotion and/or organisation and/or conduct of the event are insured against loss of injury caused through their negligence.

State your age if you are under 18 _____

I declare that the use of the vehicle hereby entered will be covered by insurance as required by the law which is valid for such part of this event as shall take place on roads as defined by the law.

I understand that should I at the time of this event be suffering from any disability whether permanent or temporary which is likely to affect prejudicially my normal control of my vehicle, I may not take part unless I have declared such disability to the ASN which has, following such declaration, issued a licence which permits me to do so.'

I enclose the appropriate Entry Fees and other charges.

I declare that the information given on this form is a correct statement of fact as verified by me.

ENTRANT'S SIGNATURE:	Age if under 18	Competition Licence Category & No.
DRIVER'S SIGNATURE:	Age if under 18	Competition Licence Category & No.
CO-DRIVER'S SIGNATURE:	Age if under 18	Competition Licence Category & No.
DATE:	DATE:	DATE:
THIS ENTRY IS MADE WITH MY CONSENT (if under 18)	THIS ENTRY IS MADE WITH MY CONSENT (if under 18)	THIS ENTRY IS MADE WITH MY CONSENT (if under 18)
Parent or Guardian of Entrant (Full name of parent or guardian in block letters please)	Parent or Guardian of Driver (Full name of parent or guardian in block letters please)	Parent or Guardian of Co-Driver (Full name of parent or guardian in block letters please)
Relationship to Entrant	Relationship to Driver	Relationship to Co-Driver
Address _____	Address _____	Address _____
Tel.No. _____	Tel.No. _____	Tel.No. _____
Signature _____	Signature _____	Signature _____

Guardian
Basing
Goodwood
Normandy



Hawk
Earl
Fox
Scavenger
Redline

Southern Rescue Group

Dear Competitor

On behalf of the Rescue and Recovery services, we would like to bring to your attention that the organisers of this event have agreed to make provision for you to make a voluntary contribution to a safety fund which will be distributed equally amongst the licensed Rescue and Recovery units on this event.

The costs associated with running rescue and recovery units are expected to escalate considerably in the near future as we are obliged to provide more sophisticated equipment. Our traditional source of vehicles, the Ambulance Service, has adopted a policy of leasing vehicles in recent years. As these all have high residual values, the abundant source of reasonably priced second-hand vehicles has already started to dry up. We have just replaced one of our older units with a new vehicle at a cost of £20,000 which has been funded by members of the team individually.

Those of you who have had the misfortune to meet us in our official capacity will appreciate the vital importance of having the best possible equipment available and the training to use it. For example the best known item of equipment the "Jaws of Life" with power unit would cost approx £8,500 and the medical course we would like to send our members to about £500 a head. This is the type of investment we make in your safety and remember- we do this as a hobby – we do not get paid!

We ask you to help us continue to provide the level of safety cover that you would wish to have by making a contribution of £10 or what ever you think your safety is worth and include it with your entry for this great event. This will be passed on directly to the Rescue and Recovery units on the event by the organisers. If every competitor added this level of contribution to their entries, it would start to make a significant difference over the course of a year and allow us to invest in better equipment, which we hope we never have to use on you!

Thank you

The Southern Rescue Group



Dear Organiser,

The crew of Car _____ have pleasure in adding the sum of £_____ to our entry fee in support of the Rescue and Recovery Units on the event. Please pass this amount on to them with our thanks.

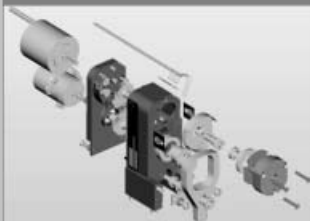
Please tear off and return to the organisers

LEADING PROVIDER OF SPECIALIST ACTUATORS & GEARS

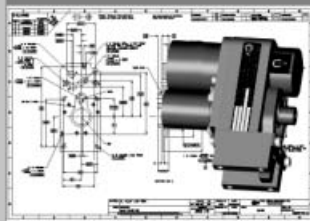
CONCEPT



DESIGN



MANUFACTURE



GEARING SOLUTIONS FOR THE 21ST CENTURY



OTM actuators can be tailored to suit extreme environments and performance requirements. OTM products are widely used throughout the aerospace and defence industries.

STANDARD SIZE 08 TO 34
GEARHEADS ALSO AVAILABLE



OTM SERVO MECHANISM LTD • The Avenue, Egham, Surrey TW20 9AL • Tel: +44 (0)1784 433155 • Fax: +44 (0)1784 471307
E-mail: enquiries@otmservo.com • www.otmservo.com

Contact:

BK Competition Tyres

On: 01206 827220 : 07976 819991 : 01621 862559

For all your tyre requirements

In attendance in the service area



Official Tyre Supplier on the Wugging Stages

UTTING ESTATES LIMITED

FAMILY BUILDING SINCE 1903

Long-term Leases and Tenancies

**Houses, Flats, Maisonettes, Garages,
Retail Outlets**

**Catford, Croydon, Gatwick, Horley, Lee,
Mitcham, Reigate, Smallfield, Streatham**

Contact Wug on 01342 843922

email: wug@btconnect.com

DIMOND & UTTING MANAGEMENT LIMITED

BUILT BETTER

A complete service from conception to completion

- Design & Build
- Conservatories
- Extensions
- Roofing
- Maintenance & Repair
- Landscaping
- Plumbing & Electrical

Contact Wug on 01342 843922

email: wug@btconnect.com